

basketweave pillows

By Marty Miller

Post stitches and chenille-like yarn give these classic cushions tons of lush texture.



what you'll need

YARN

MODA DEA Metro, 3.52oz/100g balls, each approx 124yd/114m (acrylic/nylon)

- ❑ 4 balls #9317 Vanilla or #9321 Wheat

CROCHET HOOK

- ❑ Size K/10½ (6.5mm) crochet hook or any size to obtain correct gauge

NOTIONS

- ❑ 16"/40.5cm square pillow form
- ❑ Yarn needle



SKILL LEVEL: easy

finished measurements

16"/40.5cm square

note Pillow cover is slightly less than 16"/40.5cm square. It will stretch to fit 16"/40.5cm pillow form.

gauge

10 sts + 9 rows = 4"/10cm in post stitch using size K/10½ (6.5mm) crochet hook. Remember to check gauge for best results!

how to make a gauge swatch

Row 1 Work 10 Fdc – 10 sts.

Rows 2-9 Work Rows 2-9 of Pillow Cover instructions (below).

Resulting gauge swatch should measure approx 4" x 4"/10cm x 10cm. Adjust hook size if necessary to obtain correct gauge.

pillow cover (make 2)

Row 1 Work 42 Fdc.

Rows 2 (right side)-4 Ch 2 (counts as hdc, here and throughout), turn, *BPdc around next 4 sts, FPdc around next 4 sts; rep

from * across, end with hdc in sp before turning ch – 40 post sts and 2 hdc.

Rows 5-8 Ch 2, turn, *FPdc around next 4 sts, BPdc around next 4 sts; rep from * across, end with hdc in sp before turning ch.

Rows 9-12 Ch 2, turn, *BPdc around next 4 sts, FPdc around next 4 sts; rep from * across, end with hdc in sp before turning ch.

Rows 13-36 Rep Rows 5-12 three more times.

Fasten off.

basketweave pillows



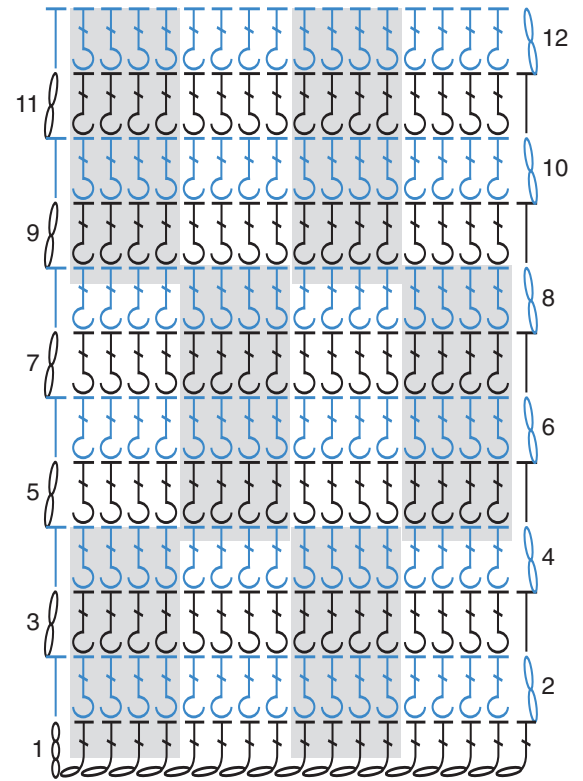
finishing

Place pieces together with wrong sides together. Join yarn through both thicknesses, in any corner.

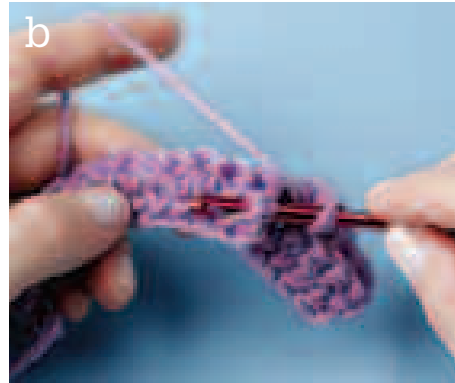
Round 1 Working through both thicknesses, *work sc evenly spaced across one side of pillow cover, work 3 sc in corner st; rep from * 2 more times; place pillow form into cover and work sc evenly spaced across last side, work 3 sc in last corner st; join with sl st in first sc. (When working in ends of rows, work one or two sts around the post of the hdc or ch-2 at the end of each row). Fasten off. Weave in all ends.

tip

Pillow covers can also be started with a standard foundation chain and a row of double crochet. To do so, ch 44, then dc in 4th ch from hook and in each ch across. Then work Rows 2-36 of the instructions.



WORKING THE BASKETWEAVE PATTERN



a To work a back post double crochet: working in back of fabric, yarn over and insert the hook from right to left around the post of the stitch below. Yarn over and complete the double crochet as you normally would.

b To work a front post double crochet: working in front of fabric, yarn over and insert the hook from right to left around the post of the stitch below. Yarn over and complete the double crochet as you normally would.

c The basketweave effect is achieved by alternating front post and back post stitches at regular intervals. Here, a front post stitch is being worked after four rows of back post stitches, which will create the pattern change.

basketweave pillows



Abbreviations used in this pattern

- ch** chain
- hdc** half double crochet
- dc** double crochet
- rep** repeat
- sp** space
- st(s)** stitch(es)
- yo** yarn over
- * Repeat directions following * as many times as indicated.
- [] Work directions in brackets number of times indicated.

special abbreviations

Fdc (Foundation double crochet)

step 1 Ch 3 (counts as first Fdc), yo, insert hook in 3rd ch from hook, yo and draw up a loop, yo and draw through one loop on hook (base-ch made), [yo and draw through 2 loops on hook] twice (Fdc made)

step 2 Yo, insert hook in base-ch of last Fdc made, yo and draw up a loop, yo and draw through one loop on hook (base-ch made), [yo and draw through 2 loops on hook] twice (Fdc made).

Rep step 2 for desired number of Fdc.

FPdc (Front Post double crochet) Yo, insert hook from front to back to front around post of indicated stitch; yo and draw up loop, [yo and draw through 2 loops on hook] twice. Skip st behind FPdc.

BPdc (Back Post double crochet) Yo, insert hook from back to front to back around post of indicated stitch; yo and draw up loop, [yo and draw through 2 loops on hook] twice. Skip st behind BPdc.