



Rose Filet Triangle

WR1973



INTERMEDIATE

Designed by Yvonne Beecher

Shawl measures 48" at widest point x 25" at longest point.

RED HEART® "LusterSheen®": 2 skeins 821 Spa Blue

Crochet Hook: 3.75mm [US F-5]
Yarn needle.

GAUGE: 12 mesh spaces = 4"; 12 rows = 4" in mesh pattern. **CHECK YOUR GAUGE.** Use any size hook to obtain the gauge.

Special Stitches

To work Mesh Space over Mesh Space: Ch 1, skip next ch-1 space, dc in dc.

To work Block over Mesh Space: Dc in next ch-1 space, dc in dc.

To work Block over Block: Dc in each dc.

To work Mesh Space over Block: Ch 1, skip next dc, dc in dc.

SHAWL

Ch 293.

Row 1: Dc in 5th ch from hook (first mesh space made), *ch 1, skip 1 ch, dc in next ch (mesh space made); repeat from * – 145 mesh spaces.

Row 2: Ch 1, turn, slip st in first dc, ch-1 space and next dc (1 mesh space decreased at beginning of row), ch 4, skip next ch-1 space, dc in next dc (first mesh space made), *ch 1, skip ch-1 space, dc in next dc; repeat from * across to last mesh space, do not work last mesh space (1 mesh space decreased at end of row).

Row 3-6: Repeat Row 2. Mark center mesh space on last row – 135 mesh spaces.

Row 7: Work as for Row 2 to marked center mesh space, following Chart, work Blocks in mesh spaces, continue to work as established to end of row.

Rows 8-73: Continue to follow Chart, decreasing 1 mesh space at beginning and end of every row. Fasten off.

FINISHING

Weave in ends.

Fringe: Cut 2 lengths of yarn, each 24". Holding both lengths together, fold in half then in half again. Pull folded end through last mesh space of Row 73. Slip ends through folded loop and pull to tighten. Continue to make a Fringe in every other mesh space along each edge of Shawl. Trim ends.

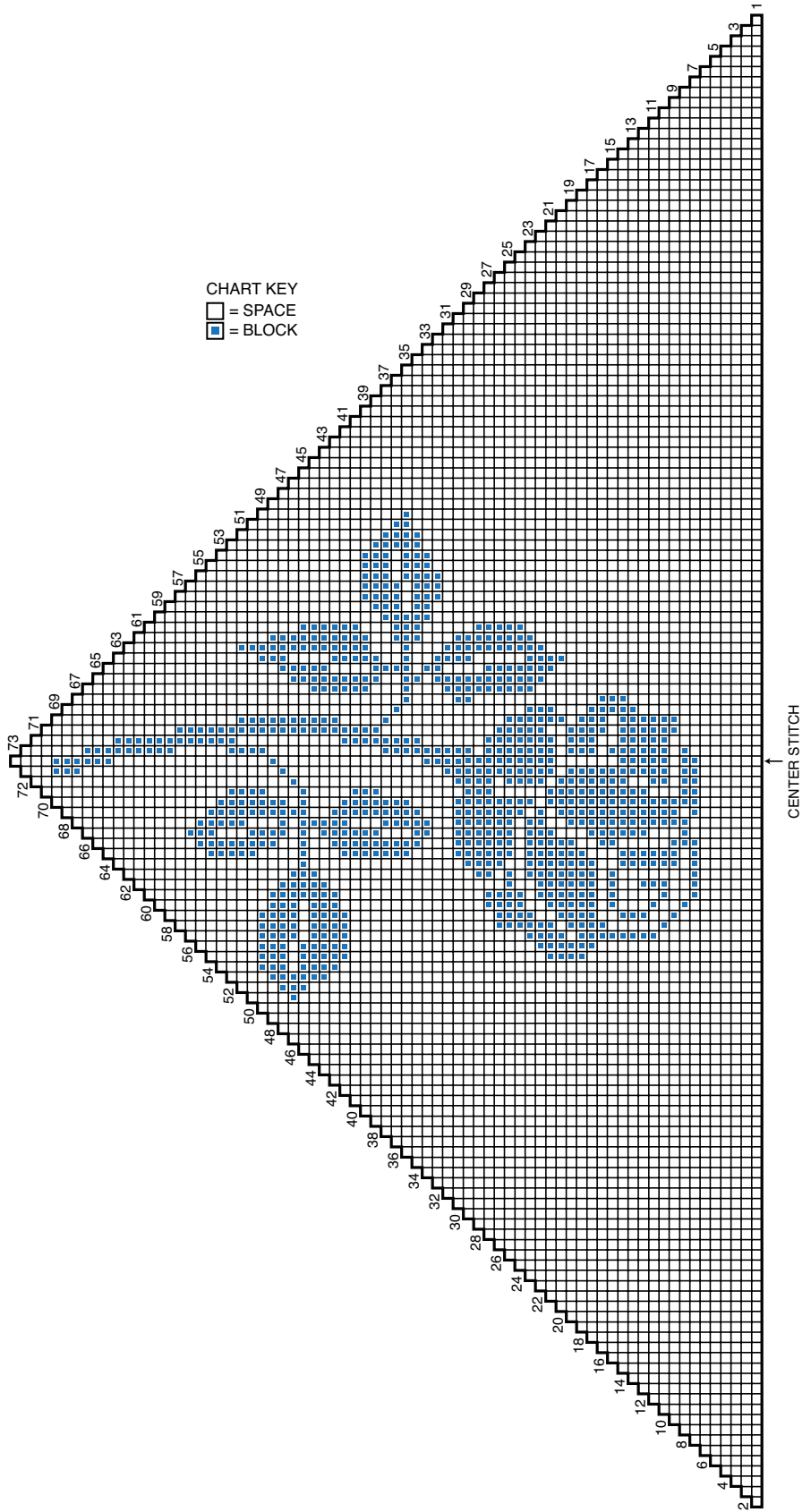


FINE

RED HEART® "LusterSheen®", Art. E721 available in 4 oz (113 g), 335 yd (306 m) balls.

ABBREVIATIONS: ch = chain; ch-space = chain space; dc = double crochet; mm = millimeters; st(s) = stitch (es); * = repeat whatever follows the * as indicated.





©2009 Coats & Clark
P.O. Box 12229
Greenville, SC 29612-0229

For more ideas & inspiration —

www.redheart.com
www.crochettoday.com

www.coatsandclark.com
www.knitandcrochettoday.com