



GAUGE: 14 sts = 4"; 19 rows = 4" in Moss Stitch using larger needles. **CHECK YOUR GAUGE. Use any size needles to obtain the specified gauge.**

SPECIAL ABBREVIATIONS:

M1: Make 1 st by picking up horizontal strand before next st and knitting into back of loop.

2/1 RPC: Slip 1 st to cable needle and hold in back, k2, p1 from cable needle.

2/1 LPC: Slip 2 sts to cable needle and hold in front, p1, k2 from cable needle.

2/2 RC: Slip 2 sts to cable needle and hold in back, k2, k2 from cable needle.

2/2 LC: Slip 2 sts to cable needle and hold in front, k2, k2 from cable needle.

2/2 RPC: Slip 2 sts to cable needle and hold in back, k2, p2 from cable needle.

2/2 LPC: Slip 2 sts to cable needle and hold in front, p2, k2 from cable needle.

Cable Panel (worked over 32 sts)

Row 1 (Right Side): 2/2 LC, p7, 2/1 LPC, 2/2 LC, 2/1 RPC, p7, 2/2 RC.

Row 2 and All Wrong Side Rows Unless Otherwise Indicated: Knit the knit sts and purl the purl sts as they appear.

Row 3: K4, p8, [2/2 RC] twice, p8, k4.

Row 5: 2/2 LC, p7, 2/1 RPC, 2/2 LC, 2/1 LPC, p7, 2/2 RC.

Row 7: K4, p6, 2/1 RPC, p1, k4, p1, 2/1 LPC, p6, k4.

Row 9: 2/2 LC, p5, 2/1 RPC, p2, k4, p2, 2/1 LPC, p5, 2/2 RC.

Row 11: K4, p4, 2/1 RPC, p3, 2/2 LC, p3, 2/1 LPC, p4, k4.

Row 13: 2/2 LC, p2, 2/2 LC, p3, 2/1 RPC, 2/1 LPC, p3, 2/2 RC, p2, 2/2 RC.

Row 14: P4, k2, p4, k3, p3, k1, p2, k3, p4, k2, p4.

Row 15: [K4, p2] twice, 2/1 RPC, k1, p1, 2/1 LPC, [p2, k4] twice.

Row 16: [P4, k2] twice, p3, k1, p1, k1, p2, [k2, p4] twice.

Row 17: 2/2 LC, p2, k4, p1, 2/1 RPC, [k1, p1] twice, 2/1 LPC, p1, k4, p2, 2/2 RC.

Row 18: P4, k2, p4, k1, p3, [k1, p1] twice, k1, p2, k1, p4, k2, p4.

Row 19: K4, p2, 2/2 LC, 2/1 RPC, [k1, p1] 3 times, 2/1 LPC, 2/2 RC, p2, k4.

Row 20: P4, k2, p6, [p1, k1] 4 times, p6, k2, p4.

Row 21: 2/2 LC, p2, k2, 2/2 RC, [k1, p1] 4 times, 2/2 LC, k2, p2, 2/2 RC.

Row 23: K4, p2, 2/2 LC, 2/1 LPC, [k1, p1] 3 times, 2/1 RPC, 2/2 RC, p2, k4.

Row 25: 2/2 LC, p2, k4, p1, 2/1 LPC, [k1, p1] twice, 2/1 RPC, p1, k4, p2, 2/2 RC.

Cabled Poncho

WR1907



One Size.

Finished Bust: 55" at lower edge

Finished Length: 15½"

RED HEART® "Eco-Ways": 3 skeins in 3360 Mushroom.

Knitting Needles: 6.5mm [US 101/2] and 6mm [US 10] circular needle, 16" long.

Cable needle.

Stitch holders.

Yarn needle.

For more ideas & inspiration —





Row 27: [K4, p2] twice, 2/1 LPC, k1, p1, 2/1 RPC, [p2, k4] twice.

Row 29: 2/2 LC, p2, 2/2 LPC, p3, 2/1 LPC, 2/1 RPC, p3, 2/2 RPC, p2, 2/2 RC.

Row 31: K4, p4, 2/1 LPC, p3, 2/2 LC, p3, 2/1 RPC, p4, k4.

Row 33: 2/2 LC, p5, 2/1 LPC, p2, k4, p2, 2/1 RPC, p5, 2/2 RC.

Row 35: K4, p6, 2/1 LPC, p1, k4, p1, 2/1 RPC, p6, k4.

Row 36: Knit the knit sts and purl the purl sts as they appear.

Repeat Rows 1-36 for Cable Panel.

Moss Stitch (multiple of 2 sts + 1)

Row 1 (Right Side): [K1, p1] across to last st, k1.

Rows 2 and 3: [P1, k1] across to last st, p1.

Row 4: [K1, p1] across to last st, k1.

Repeat Rows 1-4 for Moss st.

BACK

With larger needles, cast on 97 sts.

Next Row (Wrong Side): Knit.

Beginning with Row 1, work in Moss St for 6 rows, end with a wrong side row.

Shape Sides

Dec 1 st each side every 4th row 14 times – 69 sts.

Work 1 row.

Shape Shoulders

Bind off 4 sts at beginning next 8 rows – 37 sts.

Dec 1 st each side every row 4 times – 29 sts.

Slip remaining sts to a stitch holder for Neck.

FRONT

With larger needles, cast on 98 sts.

Next Row (Wrong Side): K37, [M1, k4] 6 times, k37 – 104 sts.

Row 1 (Right Side): Beginning with Row 1, work [k1, p1] across 34 sts for Moss st, p2, work Cable Panel across 32 sts, p2, work [k1, p1] across 34 sts for Moss st.

Work in patterns as established, omitting extra st of Moss st, for 6 rows.

Shape Sides

Dec 1 st each side every 4th row 14 times – 76 sts. Work 1 row.

Shape Shoulders and Neck

Mark center 22 sts for Neck.

Bind off 4 sts at beginning of next 8 rows, then dec 1 st each side edge every row 4 times.

At Same Time, work to marked 22 center sts, join second ball of yarn and work center 22 sts and slip to a stitch holder for Neck, work to end of row.

Working both sides at same time with separate balls of yarn and continuing to work Shoulder decreases as established, dec 1 st from each Neck edge every row 7 times.

FINISHING

Sew Shoulder and side seams.

Collar: With right side facing and smaller circular needle, join yarn at left Neck edge and pick up and k12 sts down left Front Neck edge, k22 from Front stitch holder, dec 3 sts evenly across, pick up and k12 sts up right Front Neck edge, k29 from Back stitch holder – 72 sts.

Work in K2, p2 rib for 4”.

Bind off.

Weave in ends.



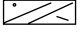
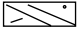

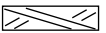
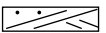

RED HEART® “Eco-Ways™”, Art. E750 available in 4 oz (113 g), 186 yd (170 m) skeins.

ABBREVIATIONS: dec = decrease; inc = increase; K = Knit; mm = millimeters; P = Purl; st(s) = stitch(es); * = repeat whatever follows the * as indicated; [] = work directions in brackets the number of times specified.

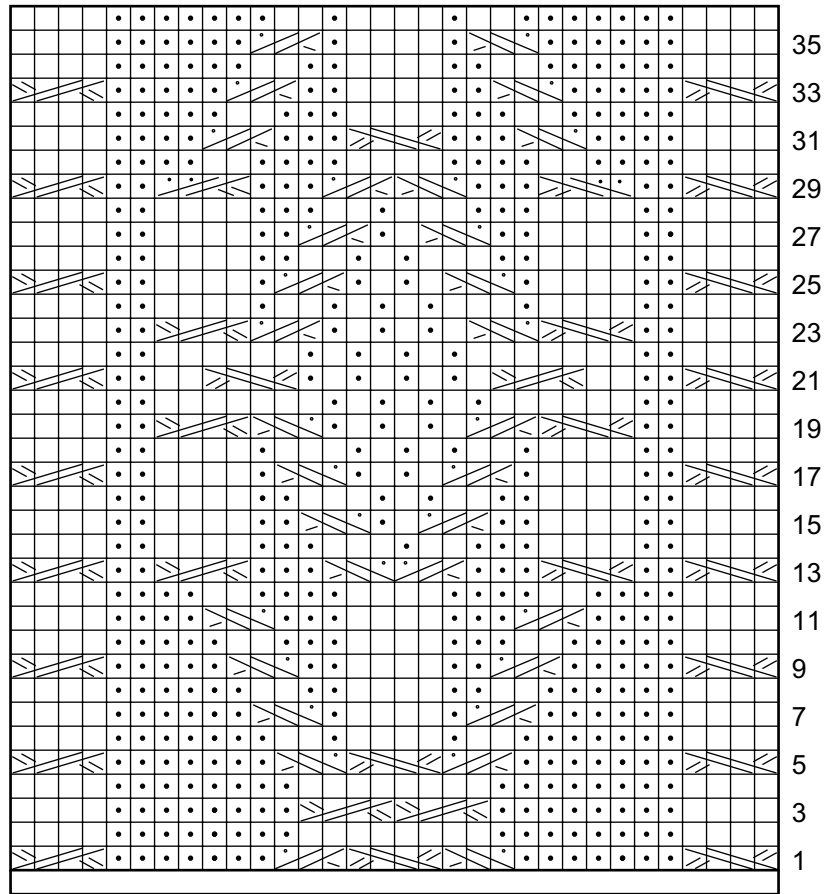




Stitch Key

- = K on RS, p on WS
- ◻ = P on RS, k on WS
-  = 2/1 RPC
-  = 2/1 LPC
-  = 2/2 RC
-  = 2/2 LC
-  = 2/2 RPC
-  = 2/2 LPC

Cable Panel



32 Stitches

