



# Scandinavian Hat

WR1976



Designed by Michelle Maks.

Hat fits 21½ (22½, 23½)" circumference head.

RED HEART® "Soft Yarn®": 2 balls 4614 Black MC, 1 ball each 4600 White A and 5142 Cherry Red B.

Crochet Hooks: 5mm [US H-8] and 5.5mm [US I-9]. Yarn needle.

GAUGE: 16 sts = 4"; 23 rows = 5" in sc with larger hook. CHECK YOUR GAUGE. Use any size hook to obtain the gauge.

### Special Abbreviation

**dec (worked over 2 sts)** = [draw up a loop in next st] twice, yo and draw through all 3 loops on hook.

### HAT

With larger hook and MC, ch 88 (92, 96).

**Row 1 (RS):** Sc in 2nd ch from hook, sc in each ch across; turn – 87 (91, 95) sc.

**Row 2:** Ch 1, sc in each sc across; turn.

Repeat Row 2 until 20 (25, 30) rows have been completed from beginning.

**Shape Top-Next Row:** Ch 1, sc in first sc, [dec] 43 (45, 47) times; turn – 44 (46, 48) sc.

**Next Row:** Ch 1, sc in each sc across; turn.

**Next Row:** Ch 1, [dec] 22 (23, 24) times; turn – 22 (23, 24) sc.

**Next Row:** Ch 1, sc in each sc across; turn.

**Next Row:** Ch 1, sc in first 0 (1, 0) sc, [dec] 11 (11, 12) times; turn – 11 (12, 12) sc.

**Next Row:** Ch 1, sc in each sc across. Fasten off, leaving a long length for sewing.

### Border

**Row 1:** With right side facing and smaller hook, join B in first st on lower edge; ch 1, sc in each st across foundation ch edge of Hat; turn – 87 (91, 95) sc.

**Row 2:** Ch 1, sc in each sc across; turn. Fasten off B.

**Row 3:** Join MC in first sc; ch 1, sc in each sc across; turn.

**Rows 4-9:** Ch 1, sc in each sc across; turn. Fasten off at end of last row.

### Lining

With smaller hook and B, ch 88 (92, 96).

**Row 1:** Sc in 2nd ch from hook, sc in each ch across; turn – 87 (91, 95) sc.

**Rows 2-9:** Ch 1 sc in each sc across; turn. Do NOT fasten off.

**Join Lining:** Hold Lining and Border together with wrong sides facing, aligning sts in Row 9. With right side of Border facing, smaller hook and B, sc in each sc across working through the double thickness of Row 9; turn.

**Next Row:** Ch 1, sc in each sc across. Fasten off.





**Embroidery**

Starting in center st and working outward, cross st Rows 3-9 of Border following *Chart A*. Starting in center st and working outward, cross st Rows 3-20 of Hat following *Chart B*.

**Finishing**

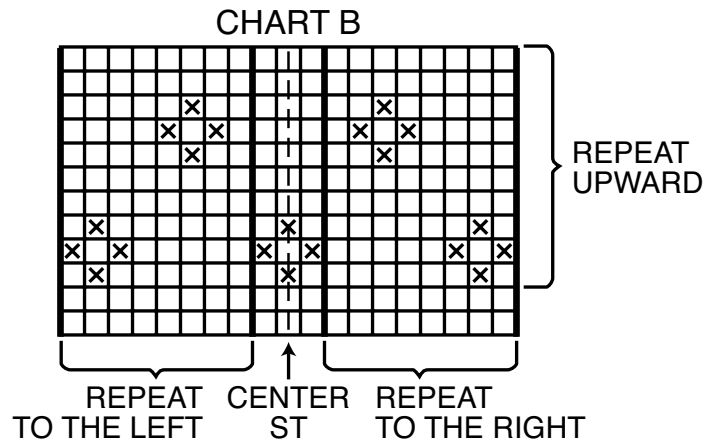
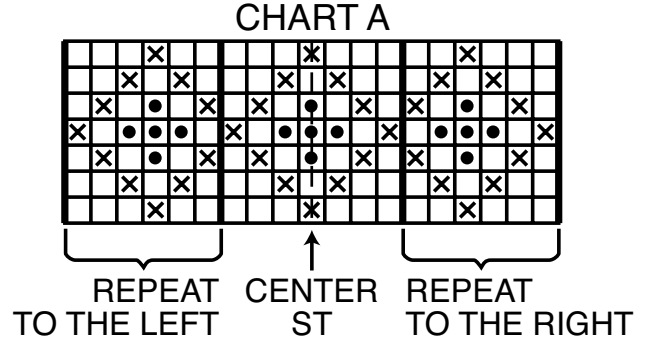
Fold Lining to wrong side of Hat and sew foundation chain edge of Lining to corresponding row on inside of Hat Border with **B**. With yarn needle, weave sewing length at top of Hat through last row of sts; draw up firmly, fasten securely. Sew back seam of Hat. Sew edges of Lining separately on inside. With **B**, make a loose 6" pompom and attach securely to center top of Hat.



**RED HEART® "Soft Yarn®"**

Art. E728 available in solid 5 oz (140 g), 256 yd (234 m); Print 4 oz (113 g), 204 yd (187 m) balls.

**ABBREVIATIONS:** **A, B** = color A, B; **ch** = chain; **dec** = decrease; **MC** = main color; **mm** = millimeters; **sc** = single crochet; **st(s)** = stitch(es); **yo** = yarn over; **[ ]** = work directions in brackets the number of times specified.



**CHART KEY**

- = cross st in A
- = cross st in B

