




TLC[®] Amoré[™]

Featherweight and soft, here's the perfect yarn for light sweaters, hats and throws.

 MEDIUM 4 WORSTED	10 x 10 cm  5 mm 8 US 16 S	10 x 10 cm  5.5 mm I-9 12 SC
	4 x 4 inches 24 R	4 x 4 inches 14 R

Art. E515

80% Acrylic / 20% Nylon
Machine wash warm, gentle cycle.
Tumble dry low.

Solids

6 oz (170 g)

Approximately 335 yd (306 m)

Multis

4.5 oz (127 g)

Approximately 252 yd (230 m)



3001
White



3105
Cream



3103
Vanilla



3005
Sand



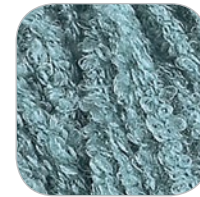
3627
Light Thyme



3620
Bamboo



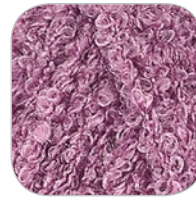
3945
Sea Oats Multi



3843
Seaglass



3823
Lake Blue



3710
Rose



3907
Red Velvet



3002
Black



◀ **Versatile Vest**,
crochet pattern
Crochet Today! -
Mar/Apr 2009
2-4 skeins - 3843
Seaglass



Cardi Wrap,
crochet pattern
Crochet Today! -
Aug/Sept 2006
7-8 skeins - 3907
Red Velvet ▶