



Fir Cone Lace Scarf

LC2196



INTERMEDIATE

Designed by Scarlet Taylor.

Scarf measures 5" x 50".

AUNT LYDIA'S® "Bamboo", Size 10: 2 balls 0705 Pure Pink.

Knitting Needles: 2.75mm [US 2].
Stitch holder, tapestry needle.

GAUGE: 40 sts = 4" in pattern stitch blocked. **CHECK YOUR GAUGE. Use any size needles to obtain the gauge.**

Special Abbreviations

S2kp2 (slip 2, k1, p2sso) = Slip next 2 sts together knitwise to right needle; knit next st, pass the 2 slipped sts over knit st and off right needle.

ssk (slip, slip, knit) = Slip next 2 sts one at a time knitwise to right needle; insert point of left needle into the fronts of these 2 sts and knit them together from this position.

NOTE: This stitch pattern creates a fabric that is scalloped only at the cast on edge. Therefore, the scarf is made in two pieces, then joined to allow for scalloped edges on both ends.

Fir Cone Lace Pattern (multiple of 10 sts + 1)

Row 1 (Wrong Side) and all wrong side rows: Purl.

Rows 2, 4, 6, and 8: K1, * yo, k3, s2kp2, k3, yo, k1; repeat from * across.

Rows 10, 12, 14, and 16: K2tog, * k3, yo, k1, yo, k3, s2kp2; repeat from * ending last repeat k3, yo, k1, yo, k3, ssk. Repeat Rows 1 – 16 for pattern.

FIRST HALF SCARF

Cast on 49 sts.

Work 4 rows in Garter st, ending with a right side row.

Next Row: K4, work Row 1 of Lace pattern across row to last 4 sts, k4.

Keeping first and last 6 sts in Garter st and center sts in Lace pattern, repeat Rows 1 – 16 until piece measures 25" from beginning, ending with Row 8 of pattern. Place sts on a holder.

SECOND HALF SCARF

Work same as for first half of scarf until piece measures 25½", ending with Row 16 of pattern.

FINISHING

Place first half on a knitting needle. Thread tapestry needle with long length of yarn. Hold the two knitting needles in the left hand with wrong sides together. Keeping the yarn needle and yarn under the points of the knitting needles, graft the stitches together as follows:

- *1. Insert yarn needle through first st of front needle as if to knit and slip the st off.
2. Insert needle through 2nd st of front needle as if to purl, but leave the st on the needle.
3. Insert yarn through first st on back needle as if to purl and slip the st off.



©2010 Coats & Clark
P.O. Box 12229
Greenville, SC 29612-0229

For more ideas & inspiration —

www.redheart.com

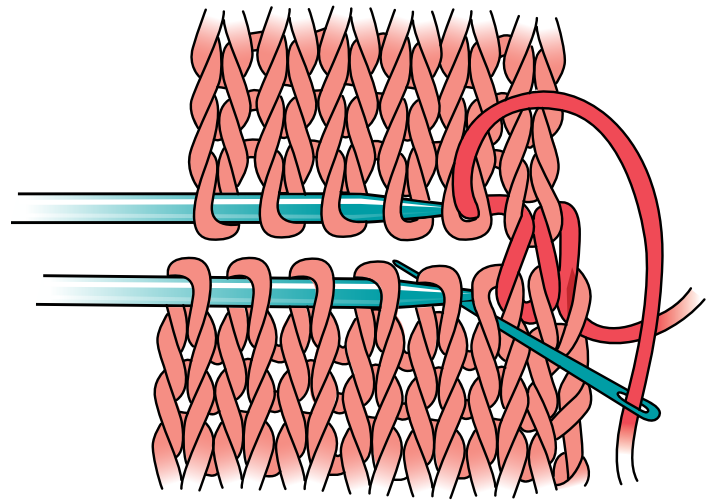
www.coatsandclark.com

www.crochettoday.com

4. Insert yarn through 2nd stitch on back needle as if to knit, but leave st on needle. Repeat from * until all the sts are joined. Take care to draw yarn up so that gauge of grafting equals gauge of knitting. Fasten off. Weave in ends on wrong side.

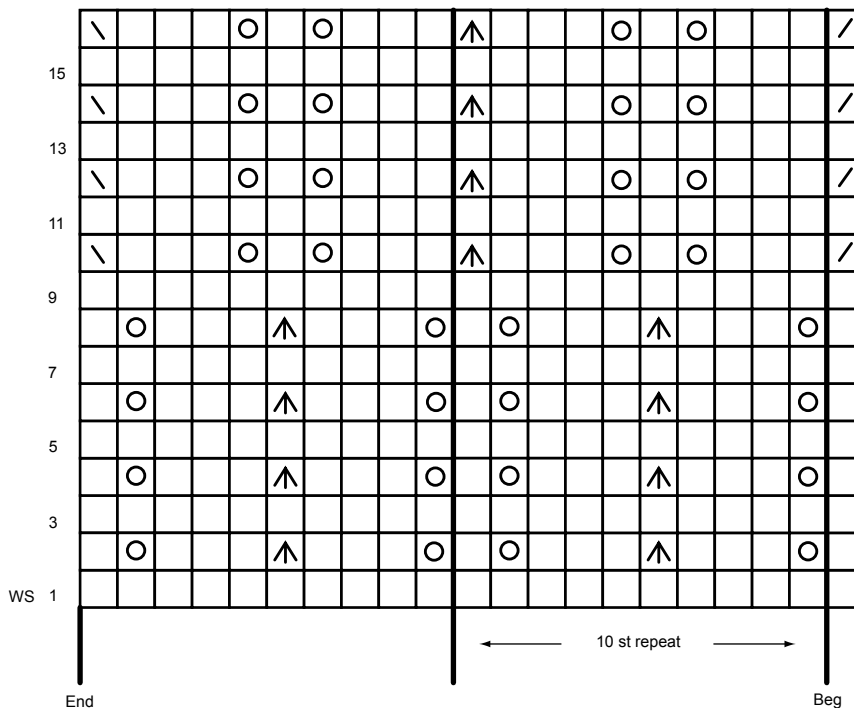
AUNT LYDIA'S® "Bamboo" Size 10, Art. 148 available in 300yd (276m) balls.

ABBREVIATIONS: k = knit; mm = millimeters;
st(s) = stitch(es); **tog** = together; **yo** = yarn over;
 * or ** = repeat whatever follows the * or ** as indicated.



Grafting Stitches

FIR CONE LACE CHART



STITCH KEY

- K on right side, p on wrong side
- Yarn over
- \ Ssk
- / K2tog
- ↑ S2kp2



©2010 Coats & Clark
 P.O. Box 12229
 Greenville, SC 29612-0229

For more ideas & inspiration —

www.redheart.com

www.coatsandclark.com

www.crochettoday.com