

# CRAZY QUILTED LUNCH BAG

CS0046

Our lunch bag with crazy quilting using neon colored Dual Duty XP® on brightly colored fabric makes the most boring lunch fun.

## SUPPLIES:

- Dual Duty XP® All Purpose thread to match fabric
- Dual Duty XP® Threads in bright colors (select from color numbers 9213 – 9278) for decorative stitching
- Coats All Purpose Zipper to match fabric: 7"
- Fabric\* for bag: ½ yard
- Fabric\* for lining: 1 ¼ yard
- Insul-Bright™ needled insulating lining: ¾ yard
- Stabilizer: 9 x 8 piece
- Sew on Velcro: 1 ½" piece

\* We used Park Slope fabrics by Erin McMorris for FreeSpirit. Our zipper was color 135C Tango and thread colors used were: 9278 Neon Orange, 9265 Neon Green and 9255 Bright Parakeet.

## INSTRUCTIONS:

### CUTTING:

From bag fabric:

- Cut 2 pieces 12" x 13" for lunch bag body
- Cut 1 piece 3 ½" x 22" for handle
- Cut 1 piece 8" x 5" for the flap

From lining fabric:

- Cut 2 pieces 12" x 13" for bag body
- Cut 2 pieces 8" x 10" for flap (*1 piece will be used as back lining the pocket in the flap. This step may be eliminated*)
- Cut 1 piece 8 ½" x 6 ½" base for decorative sewing on lunch bag flap
- Cut 1 piece 8" x 5 ½" for underlining of front flap pocket

From Insul Brite insulation fabric:

- Cut 2 pieces 12" x 13" (*Optional*)

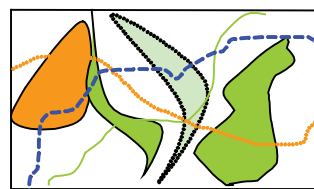
### SEWING:

1. To make lunch bag flap:  
Place stabilizer behind 8 ½" x 6 ½" piece of lining fabric. Cut scraps of main fabric into abstract shapes. Pin in place on the lining fabric until you have a pleasing



arrangement. (Illus. 1) Using Dual Duty XP neon threads zigzag or buttonhole stitch appliqué pieces to background.

Applique with zigzag or buttonhole stitch



Finish with random rows of decorative stitching

Illus. 1

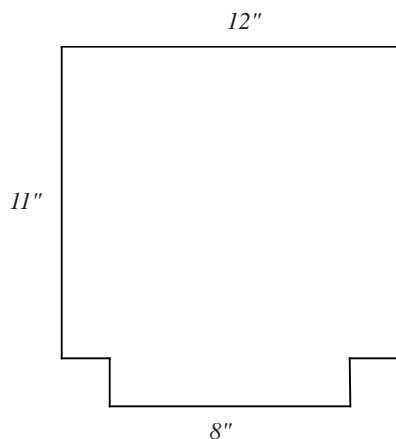
Once all pieces have been appliquéd finish with random rows of decorative stitches trim finished piece to 8" x 6". Remove stabilizer.

2. To insert zipper in lunch bag flap, fold under and press ½" along the top of the embellished 8" x 6" and along the bottom of the main fabric piece measuring 8" x 5". Insert pocket lining piece (8" x 5 ½") under the folded edge of the embellished pocket flap wrong sides touching. This extra lining piece protects the back of the decorative stitching. Place 7" zipper under the fold, stitch close to the fold. Repeat on the other side. Topstitch ¼" from the zipper along the embellished piece of flap. Do not topstitch the top piece yet. Trim zipper ends.
3. Put flap lining piece and flap top right sides together. If desired, put the remaining 8" x 10" piece of lining fabric



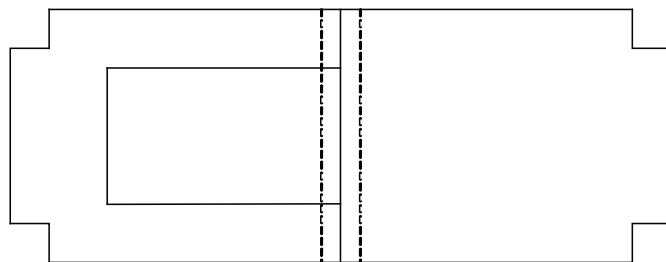
behind the outside lining piece wrong sides together. Using a 1/2" seam allowance stitch the flap pieces open. Leave the top open for turning. Trim corners. Turn right side out. Press.

4. Topstitch along the top of the zipper, 1/4" from the zipper to create the top edge of the flap pocket. Topstitch 1/4" along the outside edges of the flap.
5. Cut 2 inch squares from the corners along the narrow bottom of each 12" x 13" piece of main fabric and lining fabric. Repeat with the Insul Bright batting. (Illus. 2)



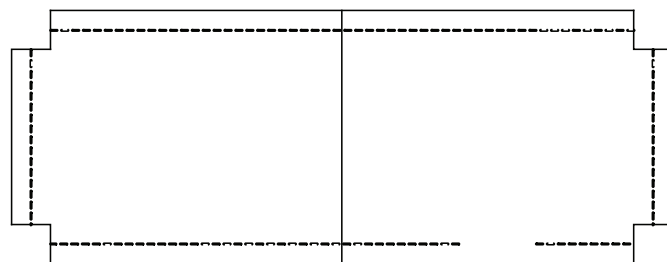
Illus. 2

6. Center Velcro pieces 1" below top edge of bag lining. Stitch in place.
7. Baste Insul Bright to the lining fabric along the sides.
8. Center the flap right side down along the top of a main fabric piece. Baste 1/4" from the edge.
9. Using a 1/2" seam allowance sew the lining fabric to the main fabric along the top edges. (Illus. 3)



Illus. 3

10. Right sides together, match bag fabric to the bag fabric and lining to lining. Be sure seams match. Pin. Stitch along sides leaving an opening in one side of the lining for turning. Sew along the bottom edges. (Illus. 4)

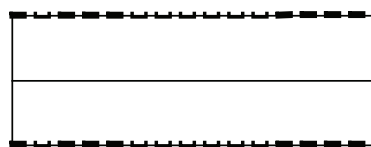


↑ main fabric

↑ lining fabric

Illus. 4

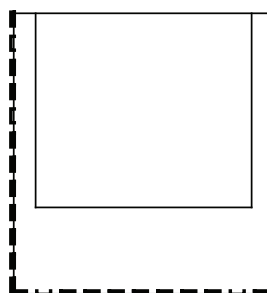
11. Match side seams to bottom seams. Using 1/2" seam allowance stitch to close bottom of bags. Repeat with other corners. Zig zag within the seams to finish edges. Turn right side out. Hand stitch the opening closed. Push lining inside the main bag.
12. Press along the top of the bag. Topstitch 1/4" from the edge.
13. Measure 2" from the top and bottom of each side seam. Fold and do a long basting stitch along the sides from bottom to top. If you used the Insul Brite Insulation fabric this edge will be bulky. Use the longest basting stitch and a larger needle. (Illus. 5)



Use a long basting stitch close to the folded edge of the bag sides.

Illus. 5

Topstitch along the bottom edges on the front and back of the bag. (Illus. 6) Do not stitch along the bottom sides.



Stitching along the folded edges and the bottom of the bag provides extra shaping for the lunch bag.

Illus. 6

14. Make the handle by folding the 3 1/2" x 22" piece of main fabric in half lengthwise. Stitch 1/2" from the edge. Turn right side out and press with seam in the middle. Topstitch 1/4" from the edge on both sides. Stitch across the ends of the handle.
15. Place unfinished edge of handle 1" inch from top of the bag right sides together. Stitch 1/4" from edge. Fold handle up stitch 1/4" from the folded edge and 1/4" from the top of the bag along the topstitching line. Repeat on the other side to finish the bag. Press.

