



Greek Key Crochet Scarf

WC1720



SCARF measures 39" x 5¼".

AUNT LYDIA'S® "Bamboo Crochet Thread®": 1 ball #1 white [available in 300 yd ball].

Steel Crochet Hook: 1.5mm [U.S. 7].

GAUGE: 18 sts and 9 rows = 2 inches. **CHECK YOUR GAUGE. Use any size hook to obtain gauge.**

Scarf

Lower Border: Ch 56.

Row 1: Dc in 3rd ch from hook, dc in each remaining ch across, turn - 55sts.

Row 2: Ch 2, skip first dc, dc in each of next 2 dc, * ch 1, skip next dc, dc in next dc, repeat from * to last 2 dc, dc in each of last 2 dc, turn.

Row 3: Ch 2, skip first dc, dc in each of next 2 dc, ch 1, skip next st, dc in each of next 15 sts, [ch 1, skip next st, dc in next dc] twice, dc in next 12 sts, ch 1, sk next st, dc in next 15 sts, ch 1, skip next st, dc in each of last 3 dc, turn.

Row 4: Ch 2, skip first dc, dc in each of next 2 dc, ch 1, skip next st, dc in each of next 3 dc, [ch 1, skip next st, dc in next dc] 5 times, dc in each of next 2 dc, ch 1, skip next st, dc in each of next 3 dc, [ch 1, skip next st, dc in next dc] 4 times, dc in each of next 2 dc, [ch 1, skip next st, dc in next dc] twice, dc in each of next 2 dc, [ch 1, skip next st, dc in next dc] 5 times, dc in each of next 2 dc, ch 1, sk next st, dc in each of last 3 dc, turn.

Row 5: Ch 2, skip first dc, dc in each of next 2 dc, ch 1, skip next st, dc in each of next 3 dc, [ch 1, skip next st, dc in next dc] twice, dc in each of next 8 sts, [ch 1, skip next st, dc in next dc] twice, dc in each of next 2 dc, ch 1, skip next st, dc in each of next 9 sts, ch 1, skip next st, dc in each of next 9 sts, [ch 1, skip next st, dc in next dc] twice, dc in each of next 2 dc, ch 1, skip next st, dc in each of last 3 dc, turn.

Row 6: Ch 2, skip first dc, dc in each of next 2 dc, ch 1, skip next st, dc in each of next 3 dc, [ch 1, skip next st, dc in next dc] twice, dc in each of next 2 dc, [ch 1, skip next st, dc in next dc] 7 times, dc in each of next 2 dc, ch 1, sk next st, dc in each of next 3 dc, [ch 1, skip next st, dc in next dc] 5 times, dc in each of next 2 dc, [ch 1, skip next st, dc in next dc] twice, dc in each of next 2 dc, ch 1, skip next st, dc in each of last 3 dc, turn.

Row 7: Ch 2, skip first dc, dc in each of next 2 dc, ch 1, skip next st, dc in each of next 3 dc, [ch 1, skip next st, dc in next dc] twice, dc in each of next 14 sts, ch 1, skip next st, dc in each of next 19 sts, [ch 1, skip next st, dc in next dc] twice, dc in each of next 2 sts, ch 1, sk next st, dc in last 3 sts, turn.

Row 8: Ch 2, skip first dc, dc in each of next 2 dc, ch 1, skip next st, dc in each of next 3 dc, [ch 1, skip next st, dc in next dc] 21 times, dc in each of next 2 dc, ch 1, skip next st, dc in each of last 3 dc, turn.

Center

Row 9: Ch 2, skip first dc, dc in each of next 2 dc, ch 1, skip next st, dc in each of next 3 dc, ch 1, skip next st, dc in each of next 7 sts, ch 1, skip next st, dc in each of next 23 sts, ch 1, sk next st, dc in each of next 7 sts, ch 1, sk next st, dc in each of next 3 sts, ch 1, sk next st, dc in each of last 3 dc, turn.

Row 10: Ch 2, skip first dc, dc in each of next 2 dc, [ch 1, skip next st, dc in each of next 3 sts] 3 times, ch 1, skip



©2009 Coats & Clark
P.O. Box 12229
Greenville, SC 29612-0229

For more ideas & inspiration —

www.redheart.com
www.crochettoday.com

www.coatsandclark.com
www.knitandcrochettoday.com

next st, dc in each of next 23 dc, [ch 1, skip next st, dc in each of next 3 dc] 4 times, turn.

Row 11: Ch 2, skip first dc, dc in each of next 2 dc, [ch 1, skip next st, dc in each of next 3 dc] 3 times, ch 1, skip next st, dc in each of next 23 dc, [ch 1, skip next st, dc in each of next 3 sts] 4 times, turn.

Row 12: Ch 2, skip first dc, dc in each of next 2 dc, ch 1, skip next st, dc in each of next 7 sts, ch 1, skip next st, dc in each of next 3 dc, ch 1, skip next st, dc in each of next 23 dc, ch 1, skip next st, dc in each of next 3 dc, ch 1, skip next st, dc in each of next 7 sts, ch 1, skip next st, dc in each of last 3 sts, turn.

Row 13: Ch 2, skip first dc, dc in each of next 2 dc, [ch 1, skip next st, dc in next dc] 5 times, dc in each of next 2 dc, ch 1, skip next st, dc in each of next 23 sts, ch 1, skip next st, dc in each of next 3 dc, [ch 1, skip next st, dc in next dc] 5 times, dc in each of last 2 dc, turn.

Row 14: Ch 2, skip first dc, dc in each of next 2 dc, [ch 1, skip next dc, dc in next dc] 5 times, dc in each of next 2 dc, ch 1, skip next st, dc in each of next 23 dc, ch 1, skip next st, dc in each of next 3 dc, [ch 1, skip next st, dc in next dc] 5 times, dc in each of last 2 dc, turn.

Row 15: Ch 2, skip first dc, dc in each of next 2 dc, ch 1, skip next st, dc in each of next 11 sts, ch 1, skip next st, dc in each of next 23 dc, ch 1, skip next st, dc in each of next 11 sts, ch 1, skip next st, dc in each of last 3 sts, turn.

Row 16: Ch 2, skip first dc, dc in each of next 2 dc, ch 1, skip next st, dc in each of next 3 dc, [ch 1, skip next st, dc in next dc] 5 times, dc in each of next 22 dc, [ch 1, skip next st, dc in next dc] 5 times, dc in each of next 2 sts, ch 1, skip next st, dc in each of last 3 dc, turn.

Rep Rows 9–16 until center measures 18 inches.

Rep Rows 9–15.

Next Row: Ch 2, skip first dc, dc in each of next 2 dc, ch 1, skip next st, dc in each of next 3 dc, [ch 1, skip next st, dc in next dc] 21 times, dc in each of next 2 dc, ch 1, skip next st, dc in each of last 3 dc, turn.

Top Border

Row 1: Ch 2, skip first dc, dc in each of next 2 dc, ch 1, skip next st, dc in each of next 3 dc, [ch 1, skip next st, dc in next dc] twice, dc in each of next 18 sts, [ch 1, skip next st, dc in next dc] twice, dc in each of next 12 sts, [ch 1, skip next st, dc in next dc] twice, dc in each of next 2 sts, ch 1, sk next st, dc in last 3 sts, turn.

Row 2: Ch 2, skip first dc, dc in each of next 2 dc, ch 1, skip next st, dc in each of next 3 dc, [ch 1, skip next st, dc in next dc] twice, dc in each of next 2 dc, [ch 1, skip next st, dc in next dc] 4 times, dc in each of next 2 dc, [ch 1, sk next st, dc in each dc] twice, dc in each of next 2 dc, [ch 1,

skip next st, dc in next dc] 7 times, dc in each of next 2 dc, [ch 1, skip next dc, dc in next dc] twice, dc in each of next 2 dc, ch 1, skip next st, dc in each of last 3 dc, turn.

Row 3: Ch 2, skip first dc, dc in each of next 2 dc, ch 1, skip next st, dc in each of next 3 dc, [ch 1, skip next st, dc in next dc] twice, dc in each of next 8 dc, ch 1, skip next st, dc in each of next 9 dc, [ch 1, sk next st, dc in each dc] twice, dc in each of next 2 dc, ch 1, skip next st, dc in each of next 9 sts, [ch 1, skip next st, dc in next dc] twice, dc in each of next 2 dc, ch 1, skip next st, dc in each of last 3 dc, turn.

Row 4: Ch 2, skip first dc, dc in each of next 2 dc, ch 1, skip next st, dc in each of next 3 dc, [ch 1, skip next st, dc in next dc] 5 times, dc in each of next 2 dc, ch 1, skip next st, dc in each of next 3 dc, [ch 1, sk next st, dc in next dc] 5 times, dc in each of next 2 dc, ch 1, skip next st, dc in each of next 3 dc, [ch 1, skip next dc, dc in next dc] 5 times, dc in each of next 2 dc, ch 1, skip next st, dc in each of last 3 dc, turn.

Row 5: Ch 2, skip first dc, dc in each of next 2 dc, [ch 1, skip next st, dc in each of next 15 sts] 3 times, ch 1, skip next st, dc in each of last 3 dc, turn.

Row 6: Ch 2, skip first dc, dc in each of next 2 dc, * ch 1, skip next st, dc in next dc, repeat from * to last 2 dc, dc in each of last 2 dc, turn.

Row 7: Ch 2, skip first dc, dc in each st across, turn.

First Lace Section

Row 1: Ch 6, tr in first dc, * skip next 3 dc, (tr, ch 4, tr) in next dc, repeat from * across, turn.

Row 2: Ch 6, (tr, ch 4, tr) in first ch-4 sp, * (tr, ch 4, tr) in next ch-4 sp, repeat from * across, turn.

Rep Row 2 until piece measures 8 inches from beg. Fasten off.

Second Lace Section: Hold piece with beg ch at top, join thread in unused lp of first ch.

Row 1: Ch 6, tr in first ch, * skip next 3 chs, (tr, ch 4, tr) in next ch, repeat from * across, turn.

Row 2: Ch 6, (tr, ch 4, tr) in first ch-4 sp, * (tr, ch 4, tr) in next ch-4 sp, repeat from * across, turn.

Rep Row 2 until piece measures 8 inches from beg. Fasten off.

AUNT LYDIA'S® "Bamboo Crochet Thread®", Art. 148 available in solid colors -- 300 yds

ABBREVIATIONS: **beg** = begin(ning); **ch** = chain; **dc** = double crochet; **lp(s)** = loop(s); **mm** = millimeters; **rnd(s)** = round(s); **sc** = single crochet; **slip st** = slip stitch; **sp(s)** = space(s); **st(s)** = stitch(es); **[]** = work directions in brackets the number of times specified; * or ** = repeat whatever follows the * or ** as indicated.

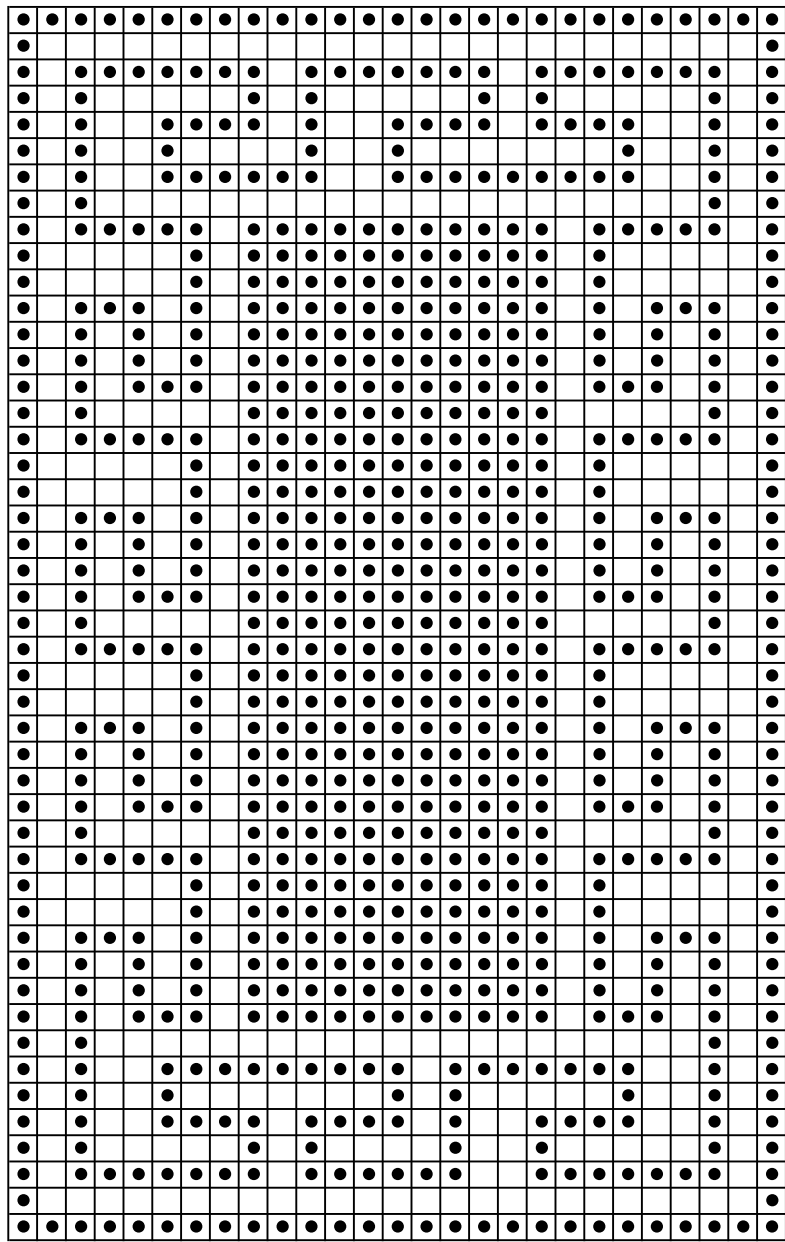


©2009 Coats & Clark
P.O. Box 12229
Greenville, SC 29612-0229

For more ideas & inspiration —

www.redheart.com
www.crochettoday.com

www.coatsandclark.com
www.knitandcrochettoday.com



7
6
5
4
3
2
1
Next Row

BORDER

16
15
14
13
12
11
10
9
8
7
6
5
4
3
2
1

1 PATTERN REPEAT
REPEAT UNTIL CENTER MEASURES APPROX 18"

BORDER



©2009 Coats & Clark
P.O. Box 12229
Greenville, SC 29612-0229

For more ideas & inspiration —

www.redheart.com
www.crochettoday.com

www.coatsandclark.com
www.knitandcrochettoday.com