



# Celtic Placemat

LC2119



Designed by Susan Lowman.

Placemat measures 11½" high x 19½" wide.

**AUNT LYDIA'S® "Classic Crochet Thread", Size 10:**  
1 ball 226 Natural.

**Steel Crochet Hook:** 1.5mm [US 7].  
Tapestry needle.

**GAUGE:** 12 mesh = 4"; 12 rows = 4" in filet pattern.  
**CHECK YOUR GAUGE. Use any size hook to obtain the gauge.**

## Special Abbreviations for Chart

**Block (●)** = Dc in next 3 sts.

**Mesh (□)** = Ch 2, skip next 2 sts, dc in next st.

**Picot** = Ch 2, slip st in top of last sc made.

**NOTE:** If your dc are NOT tall enough to obtain gauge, substitute with an extended dc in instructions and Special Abbreviations:

Extended dc = Yo and draw up a loop in next st, yo and draw through one loop on hook, [yo and draw through 2 loops on hook] twice.

## PLACEMAT

**Row 1 (Right Side):** Ch 107; dc in 8th ch from hook, [ch 2, skip next 2 ch, dc in next ch] 33 times; turn – 34 mesh.

**Row 2:** Ch 5, dc in next dc, [2 dc in next ch-1 space, dc in next dc] 32 times, ch 2, skip 2 ch of turning ch, dc in next ch; turn – 32 blocks and 2 mesh.

**Row 3:** Ch 5, dc in next 7 dc, \* [ch 2, skip next 2 dc, dc in next dc] 4 times \*\*, dc in next 12 dc; repeat from \* to last 2 blocks and 1 mesh, end at \*\*; dc in next 6 dc, ch 2, dc in 3rd ch of ch-5; turn.

**Rows 4-58:** Continue in this manner, following chart and working blocks and meshes as charted.

## Edging

Ch 1, sc in first dc, \* [2 sc in next space, sc in next dc] twice, picot; repeat from \* 15 times more, 2 sc in next space, sc in next dc, (3 sc, picot, 3 sc) all in next ch-5 space, [2 sc around post of next dc, sc in ch at base of same dc, picot, 2 sc in next space] 28 times, 2 sc around post of next dc, (sc, picot, sc) all in free loop of beginning ch, \*\* [2 sc in next space, sc in next free loop of next ch] twice, picot; repeat from \*\* 15 times more, 2 sc in next space, sc in free loop of next ch, (3 sc, picot, 3 sc) all in next ch-5 sp, [2 sc around post of next dc, sc in top of same dc, picot, 2 sc in next space] 28 times, 2 sc around post of next dc, sc in same dc as first sc, picot; join with a slip st in first sc. Fasten off. Weave in ends.

**AUNT LYDIA'S® "Classic Crochet Thread", Size 10,**  
Art. 154 available in white and ecru 400 yd (368 m) and solid color 350 yd (322 m) and shaded color 300 yd (276 m) balls.

**ABBREVIATIONS:** ch = chain; dc = double crochet; mm = millimeters; sc = single crochet; st(s) = stitch(es); yo = yarn over; \* or \*\* = repeat whatever follows the \* or \*\* as indicated; [ ] = work directions in brackets the number of times specified.



©2010 Coats & Clark  
P.O. Box 12229  
Greenville, SC 29612-0229

For more ideas & inspiration —

[www.redheart.com](http://www.redheart.com)

[www.coatsandclark.com](http://www.coatsandclark.com)

[www.crochettoday.com](http://www.crochettoday.com)

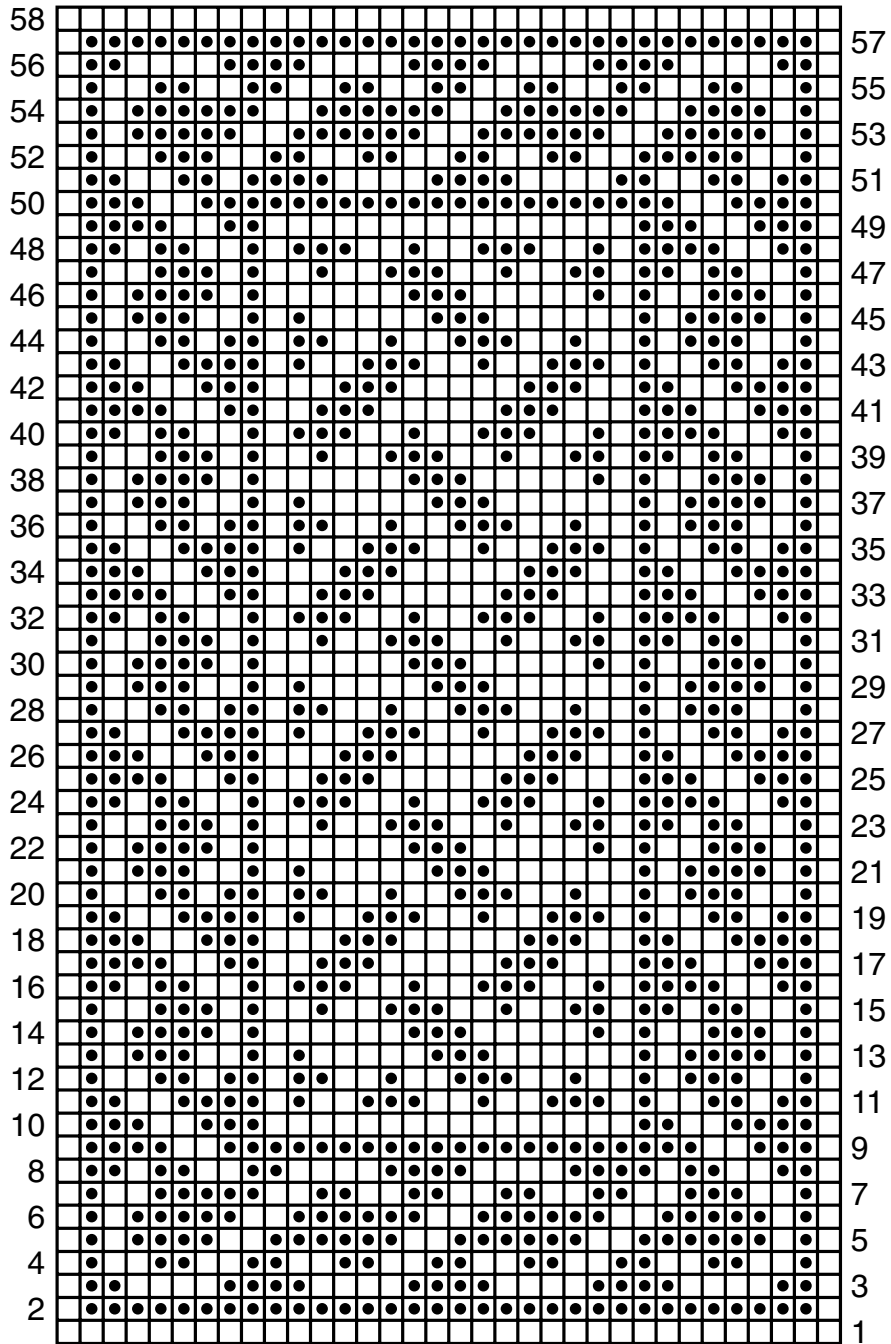


CHART KEY

- = space
- = block



©2010 Coats & Clark  
P.O. Box 12229  
Greenville, SC 29612-0229

For more ideas & inspiration —

[www.redheart.com](http://www.redheart.com)

[www.coatsandclark.com](http://www.coatsandclark.com)

[www.crochettoday.com](http://www.crochettoday.com)