



**SCARF**

Cast on 37 sts.

**Row 1 (right side):** \* P1, k1; repeat from \* across. Repeat Row 1 five times more for Seed st border.

**Setup Pattern**

**Next Row (right side):** Work 2 sts in Seed st, place marker, work Row 1 of Triangle Pattern from chart across to last 2 sts, place marker, work last 2 sts in Seed st.

Keeping sts at each end in Seed st for side borders and center sts in Triangle Pattern, work even until scarf measures 73" from beginning, ending with a wrong side row. Work 6 rows in Seed st for border. Bind off.

**FINISHING**

Fold each end of scarf up 7" for pockets. Sew side seams. Weave in yarn ends.



**RED HEART® "Stripes™"**, Art. E760 available in 3.5 oz (100 g), 170 yd (155 m) balls.

**ABBREVIATIONS:** k = knit; mm = millimeters; p = purl; st(s) = stitch(es); \* or \*\* = repeat whatever follows the \* or \*\* as indicated.

# Pocket Scarf

WR2153



Designed by Nazanin Fard.

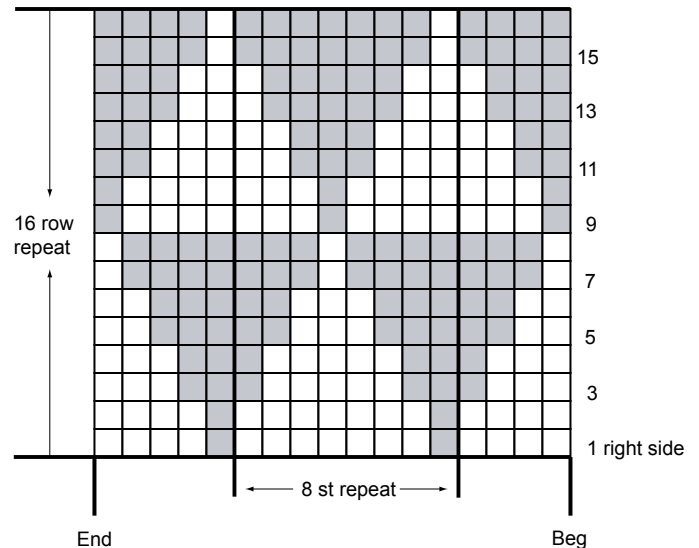
Scarf measures 74" x 8½".

**RED HEART® "Stripes™"**: 3 balls 936 Latte Stripe.

**Knitting Needles:** 5 mm [US 8].  
stitch markers, (2), yarn needle.

**GAUGE** 17 sts = 4"; 26 rows = 4" in pattern stitch. **CHECK YOUR GAUGE.** Use any size needle to obtain the gauge.

TRIANGLE PATTERN



STITCH KEY

- K on right side, p on wrong side
- P on right side, k on wrong side



©2010 Coats & Clark  
P.O. Box 12229  
Greenville, SC 29612-0229

For more ideas & inspiration —

[www.redheart.com](http://www.redheart.com)

[www.coatsandclark.com](http://www.coatsandclark.com)

[www.crochettoday.com](http://www.crochettoday.com)