



Aloha!

Bright 'marl' colors, soft cottony feel and easy care make Hula perfect for year-round kids' wear and fun accessories. Also excellent for crocheted or knitted women's apparel.

- 3-Light weight
- Machine wash & dry
- Suggested Retail \$5.49

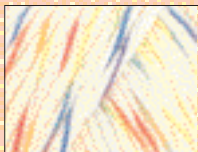


E740 Red Heart® Hula™

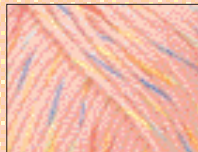
100% acrylic

3.5 oz (100 g) • approx 238 yd (218 m)

shelfpack 3 each • casepack 48 each • cube 1.342 • 13.228 lbs



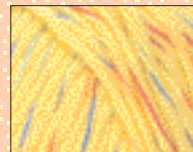
0-73650-77516-1
1901 White _____



0-73650-77522-2
1934 Pink _____



0-73650-77521-5
1927 Turquoise _____



0-73650-77519-2
1925 Lemon Fizz _____

Free Leaflet

0-73650-77581-9



LW1549
Crochet
Tie Front



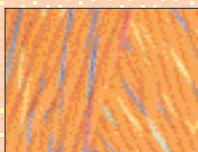
Total Pads

Free POS Swatch

0-73650-79413-1



SW740.1927
Turquoise



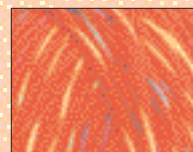
0-73650-77523-9
1945 Orangina _____



0-73650-77524-6
1947 Limeade _____



0-73650-77518-5
1912 Black _____



0-73650-77520-8
1926 Red Hot _____



Total E740

SHIPS FEB 28, 2007